

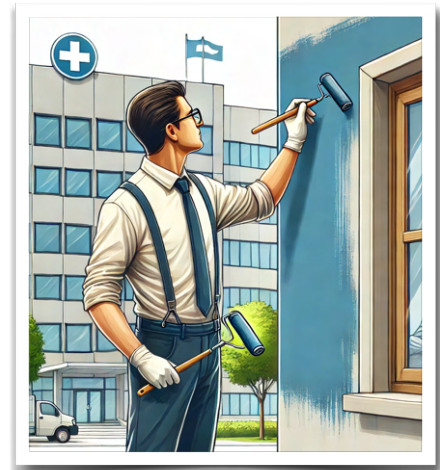


February Newsletter

**** SLA BREAKING NEWS ****

Practices facing the SLA charges will be aware of the tapered increase in these charges. At present practices are being billed their former SLA charge plus 50% of the difference between the old and the new charges. This was set to increase to 75% in April '25 and 100% in April '26.

Each rise places practices in greater financial difficulty and necessitates action to cut costs accordingly. Practices and the LMC have been raising this issue from the start and SGPC are discussing possible solutions with government.



A move to full reimbursement of non-staff (premises) costs for **all** practices could resolve the SLA issue and would also benefit practices who are not currently affected by the SLA issue. The government has acted to delay the planned rise in SLA charges in April '25 for 6 months to explore this issue further with SGPC.

For practices this means their SLA bill will remain at the 50% level until October '25. Hopefully discussions will have progressed favourably by then but if not at least this delays the next point of financial harm.

This does not solve our problem but shows that all our efforts to highlight this issue have been heard and are being acted on at the highest level. This offers a glimmer of hope that a solution might be found but we must maintain the pressure for a solution to this issue.

Secondary care prescription requests template

Lothian LMC have produced a letter which practices may find helpful to issue to our secondary care colleagues in the event of an inappropriate prescription request being made.

The letter provides the opportunity to issue a standardised response and facilitates practices to easily rebuff requests based on various criteria, which the practice can choose to justify their position. These include the request going against formulary advice; there is no shared care agreement or the practice declines to enter into the shared care agreement; or the GP does not feel competent to fulfil the prescription.

This will shortly be available on the LMC website and practices are welcome to email the office if they are unsure if the drug requested fulfils any of the above criteria.

Enhanced services

We have written at length about the 25/26 enhanced services and won't go over it again here. Our Enhanced services review and the follow up Enhanced services update remains our position. Sadly our inability to support the package is nothing new with funding being a point of contention as far back as many of us can remember.

We have been extremely impressed by the response from practices over this issue. Thank you to all who completed our calculator and copied us into their own emails to the PCCO. Thank you also to the ~200 GP's who signed their own joint letter asking PCCO to renegotiate the enhanced services. Regrettably none of these approaches were successful but as disappointing as that may be there is much in the strength of our collective response which we should celebrate. One of the biggest threats we face is not an unsuccessful negotiation, it is apathy and acceptance of our lot. We demonstrated admirably that General Practice has not given up!

We recommend that any practices yet to decide should make any final decisions based on careful consideration of the business case for each service.

LMC ROADSHOW

We are holding a LMC roadshow on **27th March 2025** in the **Novotel Edinburgh Park** (EH12 9DJ). **7pm for a 7:30 start.**

Spaces will be initially limited to 1 per practice so that every practice is able to attend. To reserve your place please email the LMC office by 7th March. If you would like additional places please mention this in your email.

There is a great deal to cover and we will provide further more detailed updates on current major issues including the SLA and enhanced services. We will talk about the practicalities of implementing the BMA workload guidance and discuss how practices can implement the more recent BMA business guidance.

There will be an update from **Dr Iain Morrison, Chair of SGPC**, about the national picture and the work that is going on with government.

Our present situation may be grim but we do have the power to shape where we are headed in the future. That future won't be shaped by hope or by others. We need to shape it ourselves.

We look forward to seeing you there.

GP Support & Advisory Group

- Do you feel that you would benefit from mentoring in your work as a GP?
- Would you welcome support relating to a complaint either now or in the past?
- Are you having dilemmas about continuing a career in General Practice?
- Are there difficulties with your health that is impacting how you feel about General Practice?

The GP Support & Advisory service is a great source of support for GP's and details can be found on our website. <https://lothianlmc.co.uk/what-we-do/>